

Buffet Stand Assembly Instructions

Recommendations

N.B: It is important to carefully read all instructions before beginning the assembly and before use of the furniture.

Keep the assembly instructions for future use.

A minimum of 2 people are required for assembly.

Its Recommended to assemble the Buffet Stand Table in its final place where it will be installed.

Content



1 Buffet Stand



2 Rectangular legs



16 Allen screws



1 Allen Key



8 screws
6x 1/4

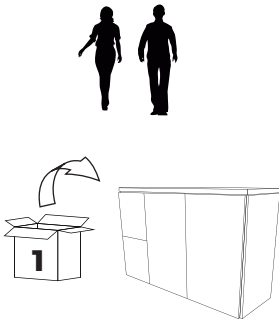


2 Door pulls
160 mm



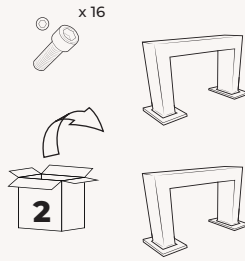
2 Door pulls
150 mm

Step 1 :



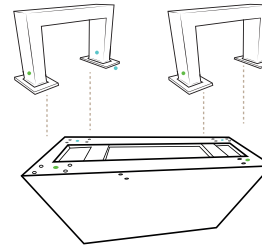
Take box number 1, with the help of a person remove the furniture from its box and place it on a flat and safe surface with the cover down.

Step 2 :



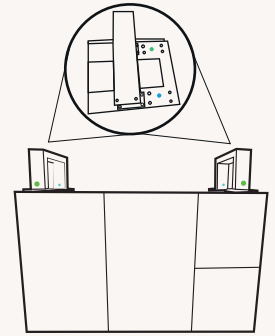
Take box number 2, unpack the legs and identify the screws, keep them at hand.

Step 3 :



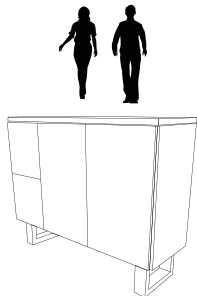
Take the leg marked "right", identify the green (A) and blue (B) dots on the leg and identify the green (A) and blue (B) dots on the furniture, then place the leg on the furniture, it is important that the green and blue dots match.

Step 4 :



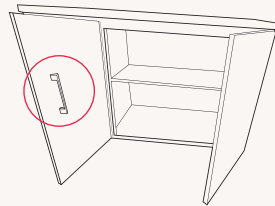
Align the holes of the leg with the holes of the furniture, take 8 allen screws and with the help of the allen wrench screw one by one until the base is fixed to the furniture.

Step 5 :



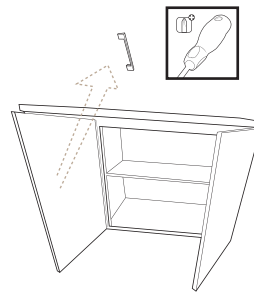
Repeat steps 3 and 4 to place the leg marked "Left" and with the help of another person return the furniture to its original position.

Step 6 :



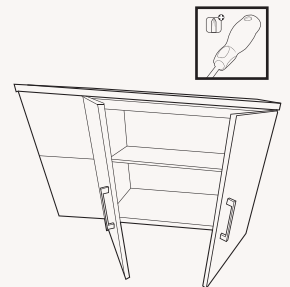
Open the doors of the buffet and identify the pulls on the inside of the doors.

Step 7 :



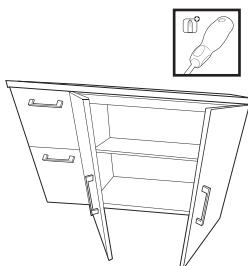
With the help of the Philips screwdriver remove the screw that hold doors pull, these are located on the outside of the door, turn them counter-clockwise until they come out completely, keep them in reserve.

Step 8 :



Take the door jamb and place it on the outside of the door, take two screws and place them on the inside of the door, these should fit into the holes of the door jamb and with the help of the Philips screwdriver turn the screws clockwise until the door jamb is fastened to the door.

Step 9 :



Repeat steps 8 and 9 for the next door and for the next door and for both drawers.

